



MSW Hybrid Program Stanislaus State

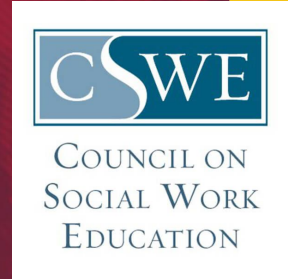
Integrative Clinical Practice Specialization for Health, Mental
Health, and Behavioral Health Settings

Information Sessions for Fall 2025



History of the Program

- 1st Cohort in 1993-94
- 1st Graduating Class 1996
- Received Accreditation 1998
 - Three accreditation reaffirmations: 2001, 2009, 2018
 - Currently accredited through 2026
 - 1000+ Graduates and counting!



Why a Hybrid MSW in Integrative Clinical Practice Specialization for Health, Mental Health, and Behavioral Health Settings?

- U.S. Department of Labor reported that the social services field would add 78,300 new jobs each year, an increase of 12% (2022)
- Job prospects (substance abuse & mental health social workers) projected to grow at 23% between 2020-2030 to create 41,000 new openings (Bureau of Labor Statistics)
- By 2028, California will have 28% fewer social workers, psychologists, and counselors than will be necessary to meet the projected demand (CA Health Care Foundation)





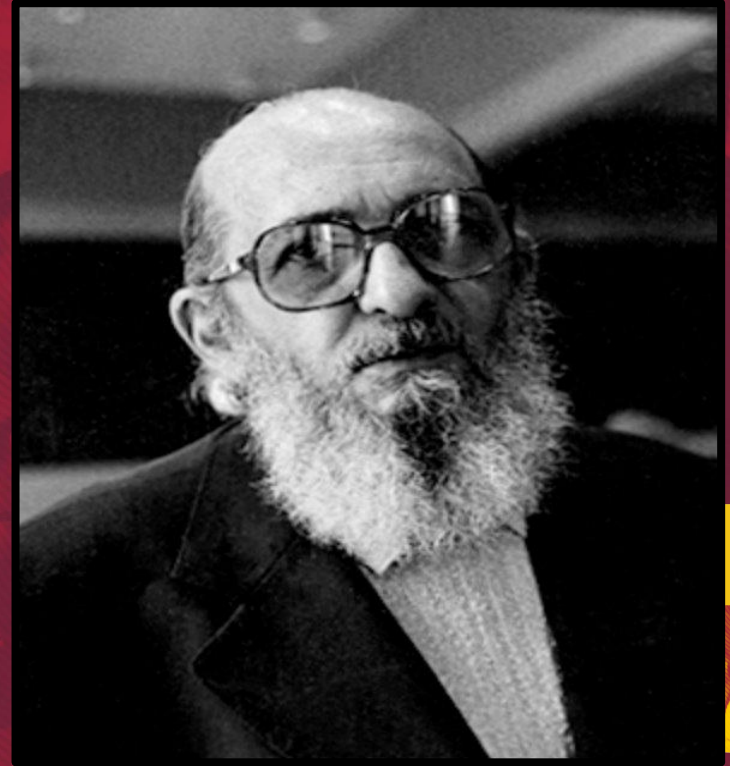
Mission Statement

The Master of Social Work Program at California State University, Stanislaus prepares social workers to advance social justice. This education is committed to social change based on an analysis of social, political and economic structures and their impact. This teaching and learning environment enables faculty, students and graduates to collaborate with others to transform the conditions which contribute to privilege and oppression. Graduates are prepared to use an advanced integrative practice approach to work with individuals, families and communities to promote personal and collective liberation.

Teaching/Learning Approach

“No one educates anyone else, nor do we educate ourselves, we educate one another in communion in the context of living in this world.”

- Paulo Freire



Program Overview

Accelerated Schedule

- 60 units, 24 months
- 2 courses every 8 weeks
- 2 face-to-face class sessions per course (one Saturday per month, including during summer practicum) at Stanislaus State Stockton Campus
- Remainder of course work completed online (asynchronous & synchronous)
- Direct social work practice courses are included in every 8 week academic session



Summer Block Placement

Summer 2026 & 2027

- Focus is on practicing and integrating skills learned in coursework
- 40 hours per week, 8 hours per day 8:00 am to 5:00 pm, M-F, 13 weeks (500 hours per summer for 2 summers for a total of 1000 hours)
- Placement must be within 2 hours travel time from the Stockton or Turlock campuses
- Includes:
 - One-to-one weekly supervision from MSW Field Instructor
 - 1.5 hours weekly seminar via zoom
 - 2 all-day Saturday (June 7th and July 12th for 2025) Integrative seminars – Stockton Campus
- Practicum FAQ: [field education faqs.pdf \(csustan.edu\)](https://www.csustan.edu/field-education/faqs.pdf)





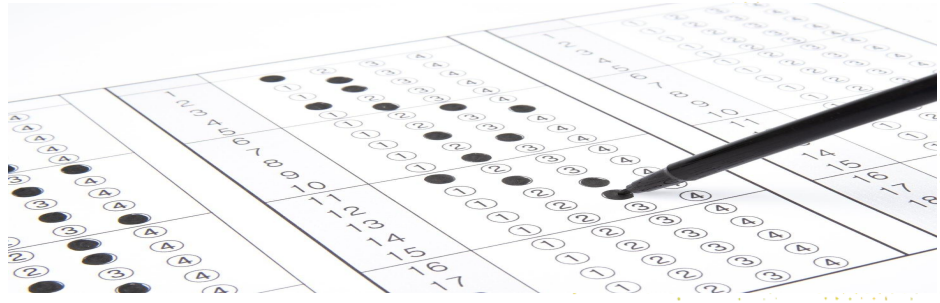
Curricular Focus

- Competency based social work practice degree
- Socially just clinical practice models (SFBT, CBT, Narrative)
- Integrative practice approach
(change factors, practice approaches)
- Clinical specialization courses
 - Assessments (Psychosocial assessments, DSM)
 - Integrated Behavioral Health (resilience/wellness model)
 - Addictions (AOD/addictions diagnosis treatment)
 - Trauma treatment models (PTSD, child abuse, community, military, migration, DV)



Comprehensive Exam

- Focuses on HBSE, Practice, Research, & Policy for clinical practice
- Builds critical thinking & knowledge for future licensing



MSW Program Faculty



Department Chair
Pollie Bith-Melander, Ph.D.,
MSW, ACSW, PPSC



Sevaughn Banks, Ph.D.



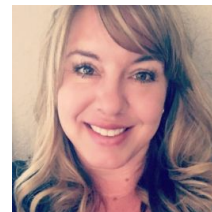
Yvonne Berenguer, MSW



Kilolo Brodie-Crumsey,
Ph.D., MSW



Sara Cadalig, DSW, LCSW



Dawn Costa, LCSW



Katie Galvin, Ph.D.



John Garcia, Ph.D.



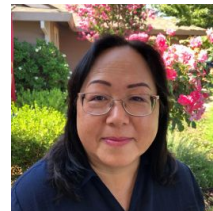
Kirsten Jasek-Rysdahl,
MA, MSW



Jennifer Johnson, LCSW



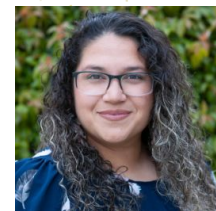
Valerie Leyva, Ph.D., LCSW



May Ying Ly, Ph.D., MSW



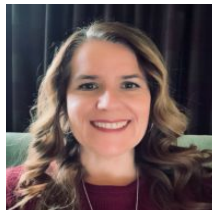
Nancy McCart, MSW, LCSW



Anacani Rocha, MSW



Jane Rousseau, Ph.D.



Daphne Short, MSW



Shradha Tibrewal, Ph.D.



Jenell Thompson, M.Ed.,
LCSW, PPSC



Paul G. Wright, Ed.D.



Nancy Zamora, LCSW,
PPSC



Technological Needs & Support

You will need:

- A computer and reliable internet connection that will support video and video conferencing.
- Enabled webcam and microphone
 - Headset microphone preferred

The University Provides:

- Help desk for general troubleshooting and support



Application Process & Timeline

University Application

- Online via <https://www.calstate.edu/apply>
- Requirements include:
 - A bachelor's degree from an accredited college or university
 - A grade point average of 2.5 or better in the last 60 units is required.

MSW Program Application

- Online via <https://www.calstate.edu/apply>
- Requirements include:
 - Liberal arts background
 - Voluntary and/or paid experience in human services
 - Computer literacy and reliable internet connection

Note: When completing the application in CalStateApply, you will be applying to both the University **and** the MSW Hybrid Program



Autobiographical Statement, Resume, & References

Autobiographical Statement

This autobiographical statement should reflect your experience in light of the MSW Program mission statement, should be typewritten (1200-1500 words), and should enable the Admissions Committee to know something of you as a person, your writing ability, your understanding of social work, and your own life experiences.

Resume

The resume should outline your voluntary and/or paid experience in human services.

References

Three academic and/or professional references from individuals who can address qualifications for study in social work, scholastic readiness, and academic proficiency. Collateral contacts (e.g. manager supervisor, executive director, etc.) constitute professional references.

Application Do's and Don'ts

DO'S

- Start your application early.
- Talk to references early and verify their correct contact information. **We and you do not have the ability to upload documents on the recommender's behalf.**
- Make sure your autobiographical statement and resume are uploaded the right way. What you see on the review screen is exactly what the reviewer will see.
- Contact the department if you have any questions on the status of your application.
- Contact Continuing and Professional Education on the status of your transcripts:
capetranscripts@csustan.edu
- Please be patient as we complete the review process

DON'TS

- Do not ask your friends to be references. References should be people who have supervised you and /or know your academic abilities.
- Do not forward documents to the department to upload on your behalf, or on your recommender's behalf. We are unable to upload documents to your application.
- Do not wait until the last minute to submit your transcripts from **all** colleges and/or universities you have attended.



Friendly Reminders

- All application components must be submitted no later than January 31, 2025 deadline.
- This includes:
 - Reference Letters
 - Transcripts from **all** colleges/universities attended (except for Stanislaus State graduates who have not attended college elsewhere since graduation)
 - Resume & Autobiographical Statement
 - The application fee via CalStateApply

Tuition & Fees

- \$ 35,100
- Financial aid may be available
 - *Unsubsidized student loans*
 - Financial aid distributes during fall and spring semesters **only**. You must save your financial aid for the summer tuition payment.
- Contact Stanislaus State Financial Aid Office
 - Complete FAFSA if you are considering this program





Contact Information

Administrative Support Coordinator

Makenna Caldie

mcaldie@csustan.edu

<https://www.csustan.edu/uee/msw-hybrid>

mswhybrid@csustan.edu